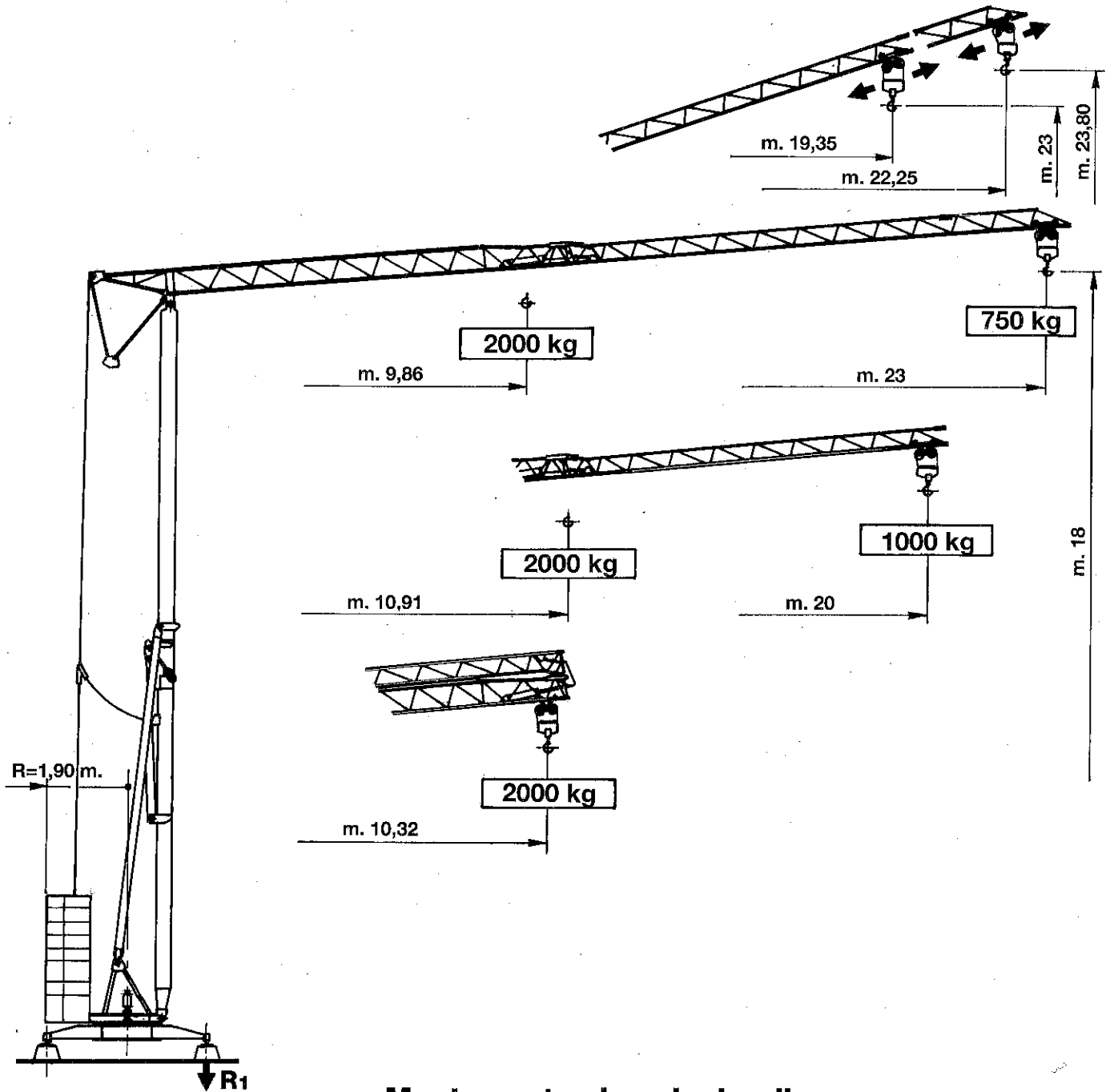
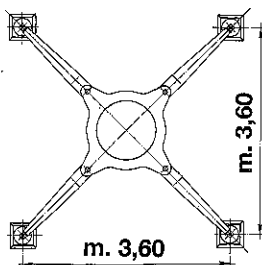




M.H. TURBO 23



Montage et calage hydrauliques
Montage und Selbstabspindelung hydraulisch
Hydraulics erection and disassembly
Montaggio e smontaggio idraulici



Version sur vérin
 Ausführung Abstützspindeln
 Jacks version
 Versione su stabilizzatori

Réactions - Eckdrücke - Reactions - Reazioni

R1 ● 11660 da N ■ 8900 da N

● En service
■ Hors service

● In Betrieb
■ Ausser Betrieb

● In service
■ Out of service

● In servizio
■ Fuori servizio

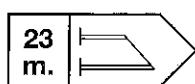
Poids de construction sans essieux - Konstruktionsgewicht ohne Transportachse -
Dead weight without transport axles - Peso della gru senza assali

Kg. 8100

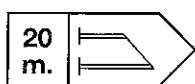
Poids du lest - Ballastgewicht - Ballast weight - Peso zavorra rotante

Kg. 12300

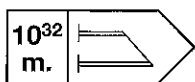
Courbes de charges - Lastkurven - Load curves - Curve di carico



9,86	12	14	16	18	20	22	23	m.
2000	1600	1340	1150	1000	880	790	750	Kg



10,91	12	14	16	18	20	m.
2000	1790	1500	1290	1130	1000	Kg



2000 Kg cost.

Flèche relevée - Ausleger in Steilstellung
Luffing jib - Braccio impennato

750 kg-cost.

Mécanismes - Antriebe - Mechanisms - Meccanismi

			m/min.	kg	CV - PS hp	Kw
Levage Heben Hoisting Sollevamento			4,5	2000	2,5	1,83
			18,5	2000	10	7,35
			37,5	1000	10	7,35
Distribution - Katzfahren Trolleying - Carrello			30		2	1,5
Orientation - Schwenken Slewing - Rotazione			0,2 - 1 tr/min - U/min rpm - g/min		2,5 da N m kg/m	
Translation - Kranfahren Travelling - Traslazione			28		1 X n°2	0,75Xn°2

Puissance électrique nécessaire
Anschlusswert
Necessary electric power
Potenza elettrica necessaria

380 V
50 Hz



Réseau - Netzstrom
Mains supply - Potenza

15 KVA

Groupe électrogène
Stromaggregat
Generator set
Gruppo elettrogeno

Nous consulter
Auf Anfrage
Consult us,
Consultarci