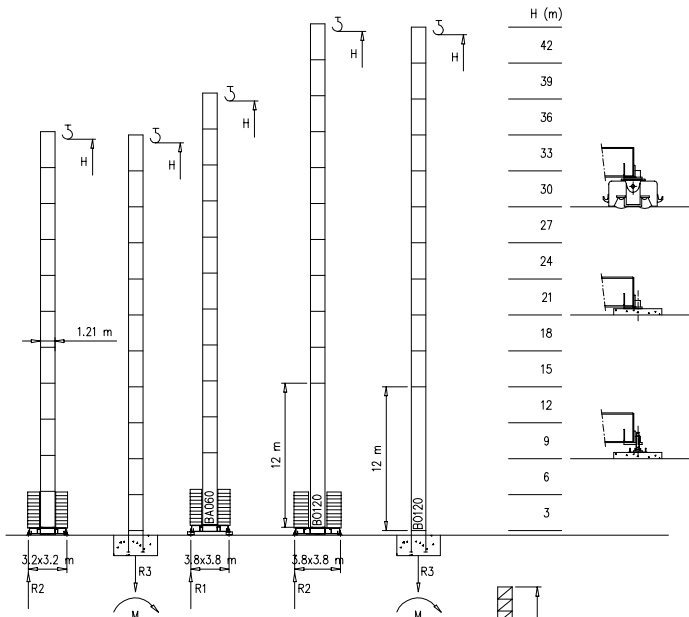


- S1210 - 1.21x1.21 m
- S1700 - 1.70x1.70 m

Torre/Reazioni – Masts/Reactions – Mat/Réactions – Maste/Eckdrücke – Mástil/Reacciones – Tramo/Reacções

S1210

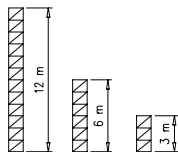
33 m → 45 m



H=37-42 m	
R1	
R2	69 t
R3	40 t
M	185 tm

H=24-36 m	
R1	53 t
R2	53 t
R3	25.6 t
M	116 tm

H=0-23 m	
R1	49 t
R2	47 t
R3	22 t
M	80 tm

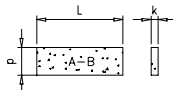


Peso zavorra – Ballast weight – Poids du lest – Ballastgewicht – Peso de lastre



H	n°	Tot.
0-18 m	12 A-B	36000 kg
19-36 m	18 A-B	54000 kg
37-42 m	24 B	72000 kg

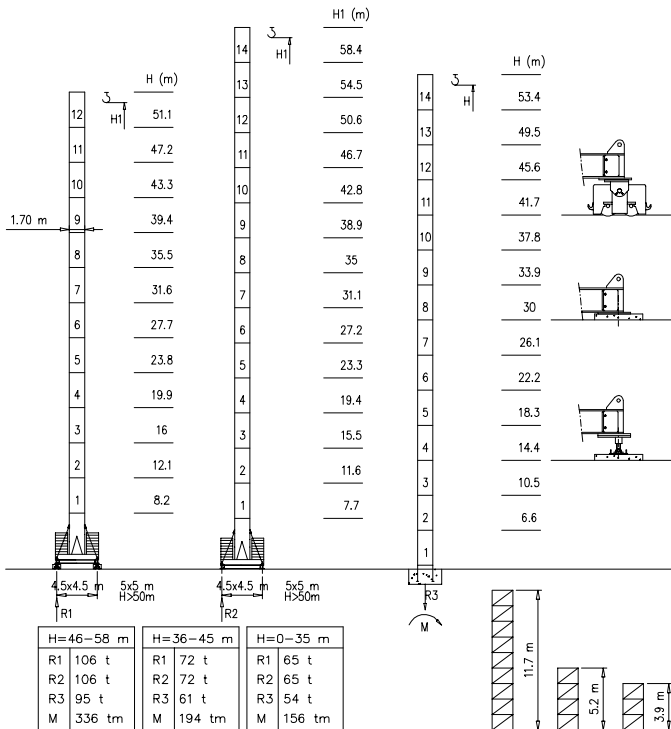
	A	B
L	3.6m	4.0m
k	0.3m	1.2m
d	1.15m	0.19m



Torre/Reazioni - Masts/Reactions - Mat/Réactions - Maste/Eckdrücke - Mástil/Reacciones - Tramo/Reacções

S1700

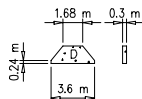
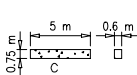
33 m → 45 m



Peso zavorra - Ballast weight - Poids du lest - Ballastgewicht - Peso de lastre



H	n*	Tot.
0-35 m	2C+ 18D	60800 kg
36-45 m	2C+ 22D	72000 kg
46-58 m	2C+ 32D	105000 kg



Curve di carico – Courbes de charges – Load diagrams – LastKurven – Curvas de cargas

Pmax 2500 kg

	12000 kg	45 m	2	23	25	27	29	31	33	35	37	39	41	43	45	m
			2500	2500	2300	2000	1900	1800	1550	1450	1350	1200	1150	1050	1200	kg
	12000 kg	43 m	2	23	25	27	29	31	33	35	37	39	41	43	m	
			2500	2500	2200	2100	1950	1820	1700	1600	1450	1400	1320	1300	kg	
	9600 kg	39 m	2	23	25	27	29	31	33	35	37	39	m			
			2500	2500	2200	2100	1950	1820	1700	1600	1450	1400	kg			
	9600 kg	37 m	2	23	25	27	29	31	33	35	37	m				
			2500	2500	2250	2150	2000	1920	1800	1700	1550	kg				
	9600 kg	33 m	2	23	25	27	29	31	33	m						
			2500	2500	2330	2230	2130	2000	1900	kg						

Pmax 3000 kg

	12000 kg	45 m	2	19	21	23	25	27	29	31	33	35	37	39	41	43	45	m
			3000	3000	2800	2500	2300	2000	1900	1800	1550	1450	1350	1200	1150	1050	1200	kg
	12000 kg	43 m	2	19	21	23	25	27	29	31	33	35	37	39	41	43	m	
			3000	3000	2750	2500	2200	2100	1950	1820	1700	1600	1450	1400	1320	1300	kg	
	9600 kg	39 m	2	19	21	23	25	27	29	31	33	35	37	39	m			
			3000	3000	2750	2500	2200	2100	1950	1820	1700	1600	1450	1400	kg			
	9600 kg	37 m	2	19	21	23	25	27	29	31	33	35	37	m				
			3000	3000	2800	2550	2250	2150	2000	1920	1800	1700	1550	kg				
	9600 kg	33 m	2	19	21	23	25	27	29	31	33	m						
			3000	3000	2880	2630	2330	2230	2130	2000	1900	kg						

Pmax 4000/2000 kg

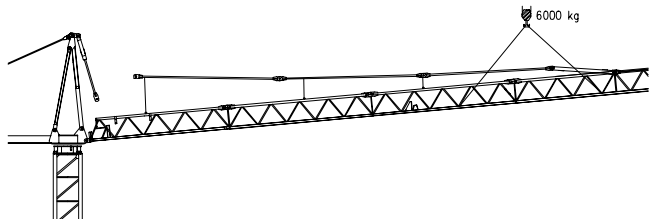
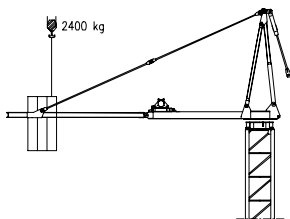
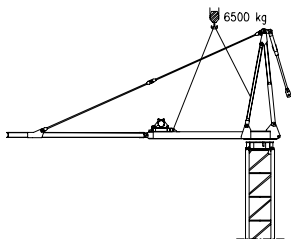
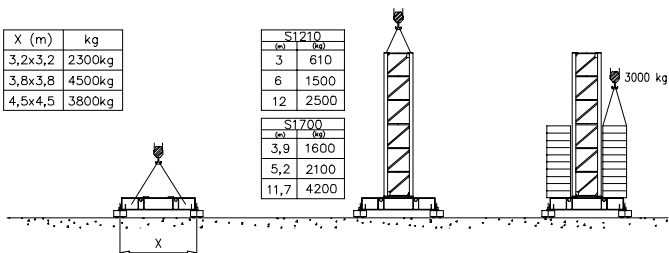
	12000 kg	45 m	2	15	17	19	21	23	25	27	29	31	33	35	37	39	41	43	45	m
			4000	4000	3520	3200	2800	2500	2300	2000	1900	1800	1550	1450	1350	1200	1150	1050	1200	kg
	12000 kg	43 m	2	16	17	19	21	23	25	27	29	31	33	35	37	39	41	43	m	
			4000	4000	3600	3150	2750	2500	2200	2100	1950	1820	1700	1600	1450	1400	1320	1300	kg	
	9600 kg	39 m	2	16	17	19	21	23	25	27	29	31	33	35	37	39	m			
			4000	4000	3600	3150	2750	2500	2200	2100	1950	1820	1700	1600	1450	1400	kg			
	9600 kg	37 m	2	16	17	19	21	23	25	27	29	31	33	35	37	m				
			4000	4000	3650	3200	2800	2550	2250	2150	2000	1920	1800	1700	1550	kg				
	9600 kg	33 m	2	16	17	19	21	23	25	27	29	31	33	m						
			4000	4000	3730	3280	2880	2630	2330	2230	2130	2000	1900	kg						

Montaggio – Montage – Erection – Montage – Montaje – Montagem

X (m)	kg
3,2x3,2	2300kg
3,8x3,8	4500kg
4,5x4,5	3800kg

S1210	
(m)	(kg)
3	610
6	1500
12	2500

S1700	
(m)	(kg)
3,9	1600
5,2	2100
11,7	4200



Meccanismi – Mechanisms – Mécanismes – Antriebe – Mecanismos

Sollevamento S15.40 e V15.40 Hoisting Levage Heben Elevaci3n Eleva3o		1a	4 m/min	2500 kg	11 kW	S15.40
		2a	20 m/min	2500 kg		22 kVA
		3a	40 m/min	1200 kg		V15.40 20 kVA
Sollevamento S20.60 e V20.60 Hoisting Levage Heben Elevaci3n Eleva3o		1a	7 m/min	2500 kg	14.7 kW	S20.60
		2a	28 m/min	2500 kg		28 kVA
		3a	56 m/min	1200 kg		V20.60 24 kVA
Sollevamento S20.40 e V20.40 Hoisting Levage Heben Elevaci3n Eleva3o		1a	4 m/min	3000 kg	14.7 kW	S20.40
		2a	20 m/min	3000 kg		28 kVA
		3a	40 m/min	1500 kg		V20.40 24 kVA
Sollevamento S25.60 e V25.60 Hoisting Levage Heben Elevaci3n Eleva3o		1a	7 m/min	3000 kg	18.5 kW	S25.60
		2a	28 m/min	3000 kg		34 kVA
		3a	56 m/min	1500 kg		V25.60 28 kVA
Sollevamento S15.40 e V15.40 Hoisting Levage Heben Elevaci3n Eleva3o		1a	4 m/min	2000 kg	11 kW	S15.40 22 kVA V15.40 20 kVA
		2a	20 m/min	2000 kg		
		3a	40 m/min	1200 kg		
		1a	2 m/min	4000 kg		
		2a	10 m/min	4000 kg		
		3a	20 m/min	2400 kg		
Sollevamento S20.60 e V20.60 Hoisting Levage Heben Elevaci3n Eleva3o		1a	7 m/min	2000 kg	14.7 kW	S20.60 28 kVA V20.60 24 kVA
		2a	28 m/min	2000 kg		
		3a	56 m/min	1200 kg		
		1a	3.5 m/min	4000 kg		
		2a	14 m/min	4000 kg		
		3a	28 m/min	2400 kg		
Carrello Trolleying Distribution Katzf3hren Distribuci3n Distribui3o		1a	OP 5 m/min	4000 kg	2.2 kW	Potenza elettrica necessaria Puissance électrique nécessaire Necessary electric power Anschlusswert
		2a	25 m/min	4000 kg		
		3a	50 m/min	2000 kg		
Rotazione Slewing Orientation Schwenken Orientaci3n Rota3o		1a	0 → 0.2	giri/min	2.2 kW @ 1200rpm	
		2a	0 → 0.6	tr/min		
		3a	0 → 0.9	rp/min		
Traslazione Travelling Translation Kranf3hren Traslaci3n Traslai3o		1a	0 → 20		3.7 kW	

Rete elettrica – Réseau – Mains supply – Netzstrom – Red – Rede electrica 400V – 50 Hz

**FM Gru** s.r.l.  
 via Emilia 11–29010 Pontenure PC ITALY  
 tel. 0523/510446 ric.caf. fax 0523/510355  
 www.fmgru.com e-mail: info@fmgru.com

FEM 1.001  
2000/14/CE



Documento commerciale non contrattuale  
 Pour toutes les informations techniques référez  
 aux correspondants instructions!

Unverbindliches Vertriebsdokument.  
 Für technische Informationen, siehe die  
 entsprechenden Anweisungen.

This commercial document is not legally  
 binding. For any technical information, please  
 refer to the corresponding instructions.

Documento comercial no contractual  
 Para cualquier informaci3n t3cnica  
 ver la notici3 correspondiente.

Code: 15CA37C80A0  
 Ed. Data Rev. Data  
 15.06.03 15.06.03